

# Beauty and functionality



ANTIBACTERIAL



WATER AND STEAM RESISTANT



NO-GROUT EFFECT



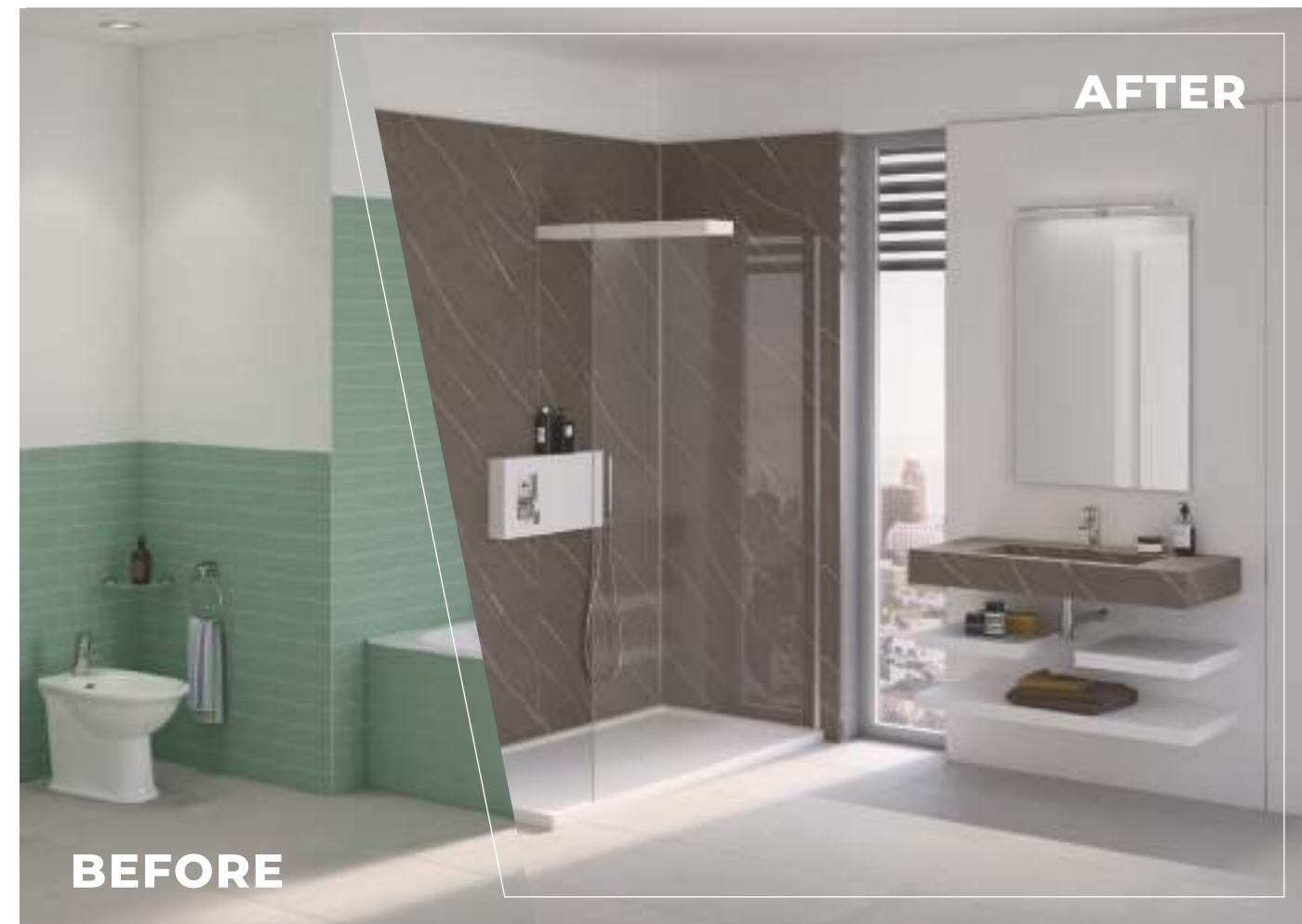
CUTTING-EDGE DESIGN



STAIN-RESISTANT



HIGH-TEMPERATURE RESISTANT



## ALUMPIÙ PANEL

The revolutionary cladding panel that simplifies work in your bathroom.

**piùesse**  
home spa

PiùService s.r.l.  
via Maestri del Lavoro 14  
30037 Scorzè (VE)  
T. +39 041.5841733  
info@piùesse.it



piùesse.it

# Easy renovation

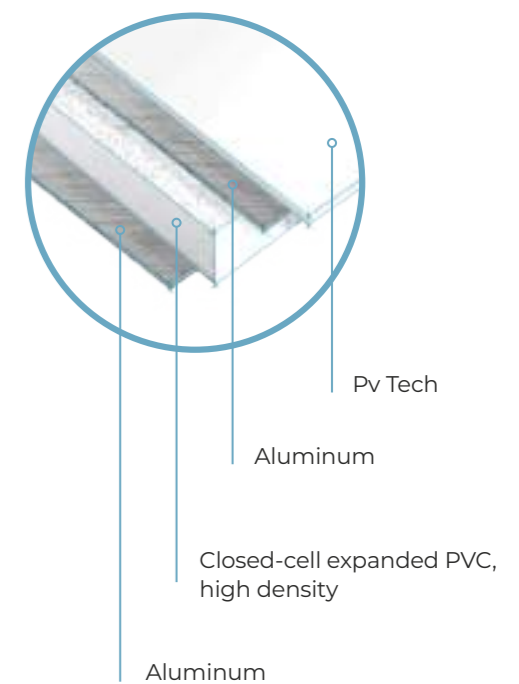


Setting up or renovating a bathroom is often a slow and challenging process.

For years, we have therefore adopted a composite panel that combines technical and aesthetic features to facilitate the work and satisfy even the most demanding clients.

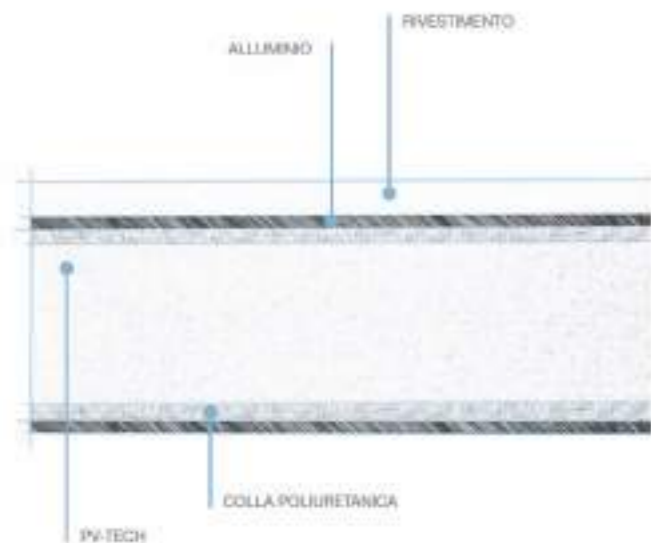
**Alumpiù Panel: PVC and aluminum, a winning combination.**

Alumpiù Panel is a panel cladding composed of a high-density expanded PVC core, with dual aluminum sheets covering the central part on both sides, and an additional PVC film that coats and protects the outer surface.



## PLUS

Alumpiù Panel can be used both as cladding and as a load-bearing structure. Thanks to the aluminum sheets within it, extremely stable shower enclosures can be created. For a simpler solution, the Light Panel version is available, suitable for cladding only.

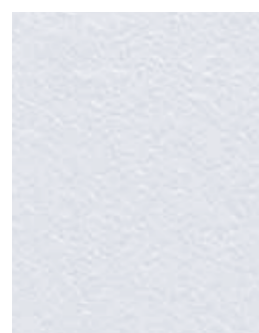


## Custom graphics

The scratch-resistant PVC layer, digitally printed with UV-resistant inks, provides an incredibly realistic and impactful result. The printing on the back prevents any type of wear on the decorated surface.



## COLORS



PVC PIETRA BIANCO



PVC PIETRA CORDA



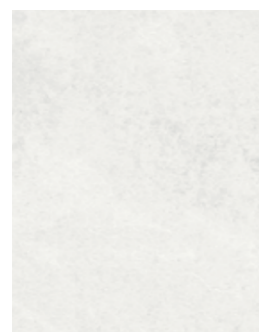
HPL 3447 PULPIS LIGHT



HPL 6090 KASPIO ARGENTO



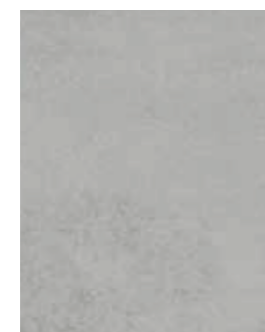
PVC CEMENTO ANTRACITE



PVC CEMENTO BIANCO



PVC CEMENTO GRIGIO CHIARO



PVC CEMENTO CORDA

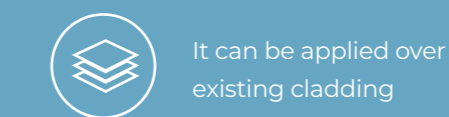


HPL 597 ARENITE CLIMB



HPL 596 PIETROGRADOCLIMB

## Installation within everyone's reach



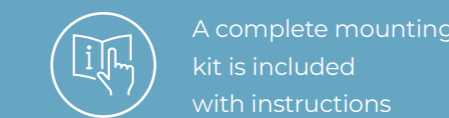
It can be applied over existing cladding



Panels can be modified on-site during the work



Installation is very simple thanks to the joining system



A complete mounting kit is included with instructions



It is super lightweight and easy to transport



No silicone needed



No demolition required



It is recyclable



It resists bending

